

Version Upgrade of the General-Purpose Inverter Option FR Configurator2 (Inverter Setup Software)

Thank you for your continued patronage of Mitsubishi Electric drive control products.

The general-purpose inverter option FR Configurator2 (inverter setup software) will be upgraded and new functions will be added.

1. Details of the Version Upgrade

(1) Addition of supported models

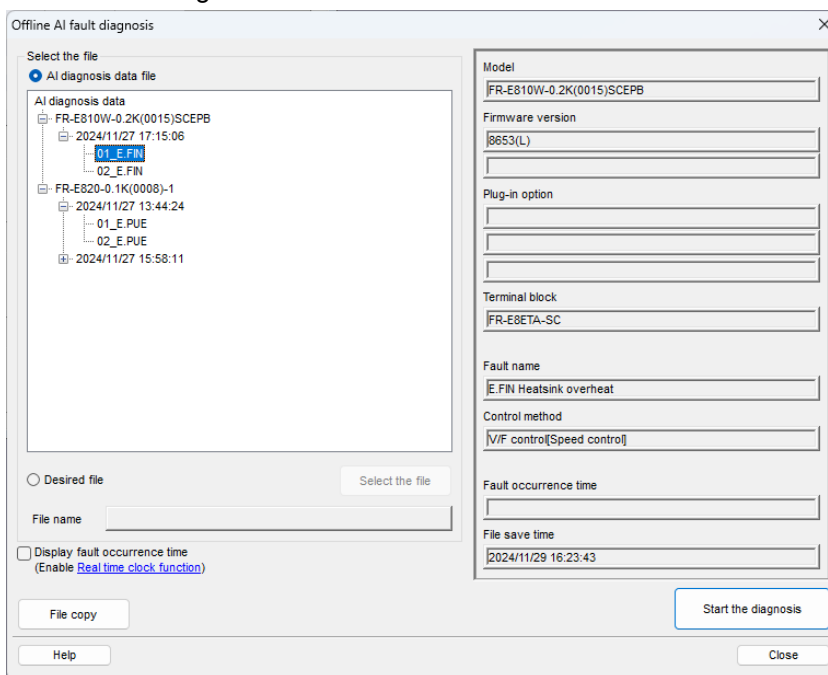
The FR-D800 series is supported.

(2) Offline AI fault diagnosis

The AI fault diagnosis function can be used without connecting FR Configurator2 online.

AI fault diagnosis results that have been diagnosed in the past can be rechecked. Additionally, AI fault diagnosis files can be saved, and AI fault diagnosis results can be checked on another personal computer.

Offline AI fault diagnosis: File selection window



(3) Addition of models compatible with the convert function

The convert function of parameters will be available between the FR-D700 and the FR-D800.

Date of issue	February 2025	Title	Version Upgrade of the General-Purpose Inverter Option FR Configurator2 (Inverter Setup Software)	Mitsubishi Electric Corp., Nagoya Works 5-1-14 Yada-minami, Higashi-ku, Nagoya 461-8670 Tel.: +81 (52) 721-2111 Main line
----------------------	---------------	--------------	---	---

2. Product Identification

The SERIAL (determined by date of production) can be checked on the DVD-ROM and the packaging label.

AF 5 3
Symbol Year Month

SERIAL

The SERIAL consists of two symbols, and two characters indicating the production year and month. The last digit of the production year is indicated as the Year, and the Month is indicated by 1 to 9, X (October), Y (November), or Z (December).

The SERIAL on the packaging label has additional three characters indicating the control number after the four characters above.